

The LINK



Your connection to...

- > Early Intervention
- > CEDARR Family Centers
- > Community Partners that serve Children with Special Healthcare Needs and their Families

The LINK Will Keep You Connected

The Paul V. Sherlock Center on Disabilities holds the contract with the Department of Human Services to provide training and technical assistance for RI's Early Intervention system. Part of that contract includes the responsibility for the production and dissemination of this newsletter: *The Link*. This is a revival and reformatting of a previous EI newsletter called *The Strand*. The focus now is not only EI but

also other programs providing services to children with special health care needs.

DHS and the Sherlock Center know how crucial information is to families with vulnerable young children. It is also critical for professionals who support these families. We hope that *The Link* will be useful to your very important work.

The best information is really communication: a

reciprocal process. We need your information, questions, and ideas in order to keep this publication timely and 'functional'. Please email Ester Brito at ebrito@ric.edu to:

- ask questions,
- to share training resources, or
- to let us know of a new initiative in your program.

Inside this issue:

Achieving Outcomes in Early Intervention	2
Learning Opportunities for Professionals	4
Learning Opportunities for Families & Professionals	6
Family Support Groups	7
Partnerships at Work	11
Resources	12



Achieving Outcomes in Early Intervention

Early Intervention (EI) is a voluntary program that provides early identification, services, and supports to eligible children (from birth to three years old) and their families. The purpose of Early Intervention is “to enable young children to be active and successful participants during the early childhood years and in the future in a variety of settings – in their homes with their families, in child care, in preschool programs, and in the community.”

The overall vision for what we hope children and their families achieve as a result of Early Intervention is that:

- ◆ **Children have positive social**

relationships

- ◆ **Children acquire and use knowledge and skills**
- ◆ **Children take appropriate actions to meet their needs**
- ◆ **Families understand their children’s strengths, abilities, and special needs**
- ◆ **Families understand their rights within the law and effectively communicate their children’s needs**
- ◆ **Families help their children develop and learn**
- ◆ **Families have adequate social**

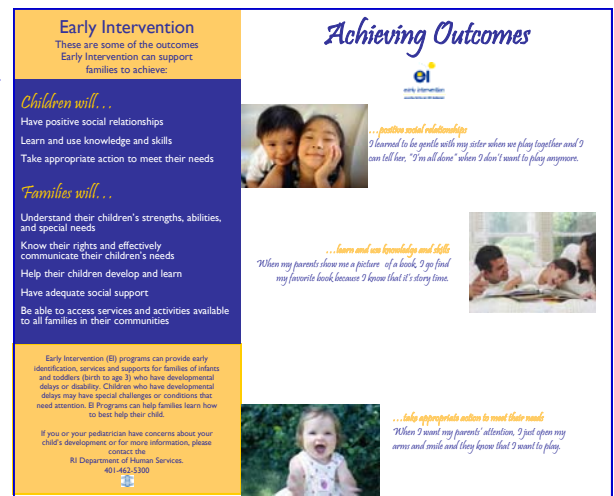
support

- ◆ **Families access services and activities that are available to all families in their community**

The Early Childhood Outcomes Center developed these outcomes with input from families, service providers and other Early Intervention and Early Childhood stakeholders. Early Intervention is now required by the Office of Special Education Programs (OSEP) to collect data on how children in EI and their families are achieving these outcomes.

For more information on outcomes visit the ECO Center at: www.the-eco-center.org

Coming Soon! Early Intervention is producing a poster that outlines the child and family outcomes. The poster has been designed so that families and community partners understand what the purpose of Early Intervention is.



Leadership Roundtable on Children with Special Healthcare Needs

“The Leadership Roundtable for Children with Special Health Care Needs is a large group of individuals who have one thing in common, their concern and interest in maximizing the health and potential of Children with Special Health Care Needs (CSHCN) and their Families.

The Roundtable is made up of Families, Advocates, Providers and representatives from State agencies that serve CSHCN. Membership is open to anyone who wishes to attend; in the past there have been over 200

people in attendance at meetings. These meetings are held every four months.

The meetings are designed to provide an opportunity for feedback in regards to the strengths, limitations and opportunities that exist as the process of improving the system of care for CSHCN and their families continues forward. This feedback is vital in many ways but in particular it provides valuable information that state departments use in developing new programs as well as improving

the performance of exiting program.

A smaller subset of this group has volunteered to serve on the Leadership Roundtable Planning Team, which is charged with implementing the recommendations of the larger group. This group meets on a monthly basis.”

Next Meeting:
February 15, 2007
10:00am - 12:00pm
Arnold Conference Center
Howard Ave. ♦ Pastore Complex
Cranston, RI





Early Intervention in Rhode Island

Fully Certified EI Providers

Children's Friend & Services

621 Dexter Street
 Central Falls, RI 02863-2603
 Phone: 401.721.9200
 Fax: 401.729.0010
 Director of Programs: Seena Franklin
 Program Manager: Michele Cameron
 Supervisor: Kelly Fennel
 Parent Consultant: Sheila Reyes

Easter Seals, RI

5 Woodruff Avenue
 Narragansett, RI 02882
 Phone: 401.284.1000
 Fax: 401.284.1006
 VP of Children's Services:
 Beverly Malinowski
 Director: Kathleen Schlenz
 Supervisor: Cristen Sassi

Family Resources Community Action

245 Main Street
 Woonsocket, RI 02895-3123
 Phone: 401.766.0900
 Fax: 401.766.8737
 Director: Darlene Magaw
 Program Manager: Marcia Card
 Supervisor: Susan Feely
 Parent Consultant: Denise Bouley

Family Service

134 Thurbers Avenue
 Providence, RI 02905-4754
 Phone: 401.331.1350
 Fax: 401.277.3388
 Familieserviceri.org
 VP of Comm. Based Programs:
 Linda DiPalma
 Director: Heather Brennan
 Supervisor: Jen Parsons
 Parent Consultant: Sandra Gonçalves

Hasbro Children's Hospital

593 Eddy Street-George Clinic
 Providence, RI 02903
 Phone: 401.444.3201
 Fax: 401.444.6115
 Referral line: 444.8982
 Administrator: Maura Taylor
 Program Manager: Ellen Jacobs
 Supervisor: Mary Fournier
 Parent Consultant: Roberta Zimmerly

Homestead Group

One Cumberland Hill Plaza, 3rd fl
 Woonsocket, RI 02895
 Phone: 401.775.1500
 Director: Lee Ann Beaupre
 Parent Consultant: Leslie Bobrowski

James L. Maher Center

120 Hillside Avenue
 Newport, RI 02840-1227
 Phone: 401.848.2660
 Fax: 401.847.9459
 Director: Kathleen Cross
 Supervisor: Sara Dionne
 Parent Consultant: Sue Vandal

J. Arthur Trudeau Memorial Center

250 Commonwealth Avenue
 Warwick, RI 02886-2752
 Phone: 401.823.1731
 Fax: 401.783.6846
 Director: Ernest Van Deusen
 Supervisor: Karen Ostrowsky
 Supervisor: Susan Quinn
 Parent Consultant: Amy Gray

 140 Point Judith Road, Unit 44
 Narragansett, RI 02882
 Phone: 401.783.6853
 Fax: 401.783.6846
 Supervisor: Susan Moses
 Parent Consultant: Carol Manglass

Meeting Street (New Location!)

1000 Eddy Street
 Providence, RI 02905
 Phone: 401.533.9100
 Fax: 401.533.9102
 Referral line: 401.533.9104
 Director: Sharon Terreault
 Supervisor: Margaret Neubauer
 Supervisor: May Insley
 Parent Consultant: Lee Ann Freitas

EI Specialty Providers

Groden Center, Inc. at the Livingston
 Center for Early Childhood Education
 30 Livingston Street
 Providence, RI 02904
 Supervisor: Cindy Akers
 Phone: 401.525.2380
 Fax: 401.421.3280
 Director: Leslie Weidenman
 86 Mount Hope Avenue
 Providence, RI 02906
 Phone: 401.274.6310 x1006

Office of Rehabilitative Services Services for the Blind and Visually Impaired

40 Fountain Street
 Providence, RI 02903
 Phone: 401.222.2300 x423
 Program Manager: Linda Hughes

EI Parent Consultant Program

Rhode Island Parent Information Network

175 Main Street
 Pawtucket, RI 02860
 Phone: 401.727.4144
 Fax: 401.727.4040
 Executive Director: Vivian Weisman
 Associate Director: Lisa Schaffran
 Program Manager: Deborah Milton
EI Surrogate Parent Program
 Program Coordinator: Tammy Russo
 Phone: 401.727.4144 x142
 Fax: 401.633.7457

EI Training and Technical Assistance Center and Early Childhood Transitions

Paul V. Sherlock Center on Disabilities

Rhode Island College
 600 Mt. Pleasant Avenue
 Providence, RI 02908
 Phone: 401.456.8072 (v)
 401.456.8773 (TDD)
 Director: Anthony Antosh
 Program Coordinator:
 Maureen Whelan
 Training and T.A. Specialist: Ester Brito

Learning Opportunities in Rhode Island

ASD Symposium

Improving Quality of Life in a Chaotic World: Stress, Coping & Emotional Regulation for People with ASD

March 9 – March 10, 2007

8:30am to 4:30pm

“Friday’s speakers will include: Jerry Newport, Nancy Wiseman, June Groden and Cooper Woodard and others from the Groden Center.

Saturday’s Speakers: Karen Levine and Carol Gray.”

For more information contact Kelly Dickson 401.467.7008 or at kelly@ccseminars.com

Brain Injury Association of Rhode Island

6th Annual Statewide Brain Injury Conference

The Changing World of Brain Injury

March 7, 2007

Crowne Plaza Hotel
Warwick
401.461.6599

Child Care Expo 2007

January 11, 2007

12:00pm-8:00pm

Johnson & Wales University
Providence

“Options for Working Parents, Prevent Child Abuse RI, Dr. Day Care Child Development Centers and Johnson & Wales University are excited to be presenting Child Care Expo 2007, a business services resource fair for early care and education programs in Rhode Island. This is an excellent opportunity for you and your company to showcase your business and products to the early care and education field. The

Expo is an occasion for program administrators, owners, educational coordinators and others to share ideas and needs with business experts and representatives. What a better way to get your business in the hands of people who really need it!”

FOR REGISTRATION FORM: Please call 401.946.2300

CHILDSPAN

Brown Bag Institute #16: Responsive Infant and Toddler Curriculum

January 20, 2007

9:00am-1:00pm

Pawtucket

Presenter: Joan A. Marshall, Educational Consultant

“During this workshop, participants will learn how to tap into infant and toddler’s basic needs and strengths. Participants will learn how to create a variety of daily learning experiences that will be both stimulating and interesting.

Audience: Infant and toddler, family child care providers, head/lead teachers, family, friend and neighbor (FFN)
Age group: Birth - 36 months”

For more information about CHILDSPAN trainings please contact Jessica at 401.721.6401

“CHILDSPAN, in collaboration with the University of Rhode Island’s Department of Human Development and Family Studies, presents the following institute:”

Social and Emotional Development of Preschool Children

February 27 - May 24, 2007

“This institute, offering three (3) credits in graduate or undergraduate studies, is intended for experienced early childhood practitioners and administrators. It will include current research on brain development, typical and disrupted development, intentional teaching practices, developmental risk

factors, and mental health assessment tools.”

Classes will be held in the early evenings and on one Saturday. The full schedule will be available in CHILDSPAN’s Spring 2007 Training Calendar.

For more information call Joseph Morra 401.721.6404

Critical Issues in Child Care Conference

Saturday, March 10, 2007
Bryant University, Smithfield

Assessing and Building upon Children’s Strengths

KEYNOTE SPEAKER: Jeanine Fitzgerald

“Brochures will be mailed in late December to DCYF-licensed child care centers, family child care homes, and school-age and youth programs in the state. Until then, call Joseph Morra, Professional Development Specialist (401.721.6404), to receive further information about the conference.”

RIHAP 13th Annual Seminar

Creating Positive Environments Foundations for Success for Children with Hearing Loss

**March 12, 2007
Providence, RI**

For more information contact Mary Catherine Hess at 401.453.7745, 401.277.3701 TDD, or mhess@wihri.org



Learning Opportunities in RI and Across the Country

Sherlock Center

Inclusion Institutes:

"The Sherlock Center will hold spring Inclusion Institutes. These institutes provide the opportunity for school personnel and parents to work in teams in planning for inclusion of individual children who have developmental disabilities. The institutes address barriers to meaningful inclusion. Teams must consist of the child's parent(s), a special educator, and a regular educator. Most teams also include teaching aides, therapists, principals, and special education directors. Each institute consist of one full day; meals are included."

For more information upcoming dates check our website at www.sherlockcenter.org or contact Erika Tuttle, 456.8072.

TechAccess

Low Tech Tools for Organization

January 18, 2007
3:30pm-5:30pm

"Explore many options for assisting your students with organization...from color coding to "homework boxes"... and more! "

Free to Low Cost Software Resources on the Web

March 22, 2007
3:30pm-5:30pm

"The Web is full of free and low-cost software for a range of abilities and interests. This workshop will provide a resource list and search tips for finding software that will work for your students!"

Please call TechACCESS of RI at 401.463.0202 to register.

American International College

Going to the Heart of Autism

April 13, 2007
9:00am-3:00pm

Springfield, MA

STEVEN E. GUTSTEIN, PH.D.

"This program is heavily based on developmental research and theories of social communication such as those developed by Barry Prizant, Catherine Lord and Amy Wetherby. The program includes theoretical perspectives which are illustrated through video presentations of actual persons on the autism spectrum who have benefited. Throughout the course of the presentation, Dr. Gutstein guides participants along a path of discovery that focuses on the pragmatics of social communication as it relates to the core deficits of autism. Participants are introduced to the systematic methods by which persons on the autism spectrum can learn to develop friendships, empathy, flexible thinking, rapid attention shifting, executive functioning, emotional regulation, and the motivations for sharing their world with others. Language, within the parameters of social communication, comes alive when integrated with real emotion."

For more information call the Center for Professional Development at 413.205.3597

4th Annual National Training Institute on Effective Practice Addressing Challenging Behavior

March 14-17, 2007
Clearwater Beach, FL

Listed below are the topics for some of the sessions available:

- *Mental Health Consultation in Early Childhood: A Collaborative Training Approach*
- *Behavior Support for Young Children: An empirical approach for resolving challenging behaviors*
- *Linking Literacy and Social Emotional Development: Practical Strategies and Fun Ideas!*
- *Effective Collaboration with Families of Young Children with Challenging Behavior*



- *What Providers can do to Adopt Evidence-based Teaching Strategies to Support the Social Development of young English Language Learners*
- *Addressing Challenging Behaviors in Early Childhood Settings: Strategies for Teachers and Trainers*
- *Measuring Infant and Toddler Progress Toward Communication Outcomes using IGDIs*
- *Infant Mental Health*
- *Teaching Tools for Young Children with Challenging Behavior: Conducting Functional Assessment Developing Plans*

For more information about sessions, presenters and travel go to: www.addressingchallengingbehavior.org or call 406.543.0872

TEACCH Fundamentals Beginning Strategies for Using the TEACCH Approach

February 12-14, 2007
Charlotte, NC

"Division TEACCH has coordinated the nation's largest statewide public based educational and treatment programs for children with autism and related communication handicaps. With current practices emphasizing least restrictive settings, many more children with autism and other severe behavior, learning and communication problems are being served in public schools, thus creating a need for in-service training activities for teachers. In recent years, TEACCH has made its training activities available to teachers and other professionals from around the world.

Target Audience:

Professionals working with children who have autism, including teachers, school support team personnel, case managers and paraprofessionals in the schools and community. This is an introductory workshop and is best suited to individuals who are new to TEACCH strategies."

For more information contact: Jean Williams 704.563.4103 x101 or jeanw@med.unc.edu

Learning Opportunities for Families and Professionals

Autism Project of Rhode Island

A Starting Point

February 7, 14, 28, 2007

March 7, 14, 21, 28, 2007

April 4 & 11, 2007

6:30pm-8:30pm Wednesday evenings

“A 9 week training series for parents and professionals teaching and raising a child with an autism spectrum disorder.

Each class has a different topic and presenter. Presentations range from Characteristic of autism, communication, visual supports, sensory integration, behavior, social supports to a parent panel where families share insight and strategies of raising a child with ASD. Classes are held once a week for 2 hours”



ASPIRE

January 16, 23, 30, 2007

February 6 & 13, 2007

6:30pm-8:30pm Tuesday evenings

“5 week training series designed to teach parents and professionals about the unique characteristics and learning styles of individuals with Asperger Syndrome. Classes are held once a week for two hours.”

Parent to Parent English and Parent to Parent Spanish

English March 15, 22, 29, 2007

April 5, 12, 2007

6:30pm-8:00pm Monday evenings

“Parent to Parent is a unique 5 week training series where parents are trained to collaborate with other parents to create an environment for their child to be successful. Parent coaches bring their experiences and education to support families who are beginning their own journey. This class is also presented in Spanish. Classes meet once a week for an hour and a half.”

For Information and registration call: Susan Sposato 401.785.2666
www.theautismproject.org

The Hasbro Center for Teaching Excellence

Understanding Learning Styles

January 11, 2007

“This workshop – a series of hands-on learning activities – is designed to introduce participants to the neuro-developmental framework as they explore strengths and weaknesses in learning.”

Orton-Gillingham for Parents

January 22, 2007

“This workshop will provide a rationale for multi-sensory teaching and demystify the Orton-Gillingham approach.”

Organized for Learning

February 8, 2007

“This workshop will examine the organizational demands of learning and how this impacts children with different learning styles.”

The Journey of Parenting: Connections to the Evolving Brains of Children Ages 4 – 14.

February 15, 2007

“This workshop uses the neurological processes of a developing brain as a framework for understanding the behavioral, social and academic changes experienced by children through a decade of maturity.”

Transitions to Higher Education

March 1, 2007

“As students with learning differences move from high school to college and other post secondary placements, careful planning becomes critical in maintaining student success. This workshop will focus on providing the information parents and students need to take the next educational steps.”

Annual Learning Differences Awareness Conference

March 3, 2007

8:30am – 3:30pm

“Featuring Keynote Speaker, Dr. Robert Brooks (presenting *The Power of Mindsets: Nurturing Motivation and Resilience in Children with Learning*

Problems) plus 2 breakouts. Contact Cathy Sanford for a conference brochure after January 1.

sanfordcw@aol.com.

Providence Marriott, Orms Street;

Self-Esteem

March 8, 2007

“This workshop will explore how learning strengths, affinities and weaknesses contribute to a child’s self-esteem. Participants will learn strategies and communication techniques to support learning and build self-esteem.”

Quirky Kids

March 12, 2007

“This workshop is devoted to demystifying quirky kids (ages 3 – 8) and defining what caring adults can do to support them. We all know young children who just don’t seem to fit in. Together we will develop a deeper understanding of these children and learn strategies to support their optimal development.

Understanding the Impact of Early Reflexes on Sensory and Academic Development.

March 28, 2007

The Central Nervous System (CNS) is the control center for all thinking, learning, and moving. It facilitates early development via automatic movement patterns called reflexes. This workshop will present a variety of reflexes and demonstrate how each can hinder development. Participants will learn to evaluate the three most prevalent reflexes and practice activities for intervention.

For more information contact:

Parent Workshop Series
c/o The Dunn Institute
220 West Exchange Street,
Suite 202
Providence, RI 02903
(401-831-7323 x17)

“Workshop cost: \$5 per person per workshop, includes refreshments & workshop materials”

Learning Opportunities for Families and Professionals

**Rhode Island
Department of
Education**

**Think BIG start small
Early Childhood
Collaborating for School
Success!**

RIDE Leadership Institute
February 9, 2007
Providence
For more information go
to: www.ritap.org

Rhode Island Parent Information Network

*Información Básica sobre los
Programas Educativos
Individualizados (IEP)*
(ABCs of IEP's in Spanish)
January 9, 2007
10:00am-12:00pm
Pawtucket

The ABCs of IEPs
January 10, 2007
10:00am-12:00pm
Pawtucket



**Knowledge is Empowering:
Advocacy Skills for Parents of
Children with Special Needs**
January 11, 2007
7:00pm-9:00pm
S. Kingstown

Basic Rights in Special Education
January 31, 2007
6:30pm- 8:30pm
W. Greenwich

**Knowledge is Empowering:
Advocacy Skills for Parents of
Children with Special Needs**
February 6, 2007
6:00pm-8:00pm
Pawtucket

**Derechos Básicos en la Educación
Especial**
(Basic Rights in Special Education in
Spanish)
February 14, 2007
10:00am-12:00pm
Pawtucket

Basic Rights in Special Education
February 14, 2007
10:00am-12:00pm
Pawtucket

Stress Relievers
February 27, 2007
6:00pm-8:00pm
Tiverton

**Homework: How to Make it Less
Work**
March 6, 2007
6:00pm-8:00pm
Pawtucket

**Información Básica sobre los
Programas Educativos
Individualizados (IEP)**
(ABCs of IEPs in Spanish)
March 20, 2007
10:00am-12:00pm
Pawtucket

The ABCs of IEPs
March 21, 2007
10:00am-12:00pm
Pawtucket

**Registration is required two
weeks in advance. To register or
to schedule future workshops,
contact Suzanne Tobin at
401.727.4144 x123 or
tobin@ripin.org**

Sargent Rehabilitation Center

**A Parent's Approach to Positive
Discipline**
January 11, 2007
7:00pm-8:30pm

"Children with Special Needs often exhibit difficult behaviors which need to be managed positively. By intervening with deceleration techniques and positive discipline at the onset of a potential confrontation, the negative behaviors are nipped in the bud. This workshop will provide hands-on techniques to help avoid confrontation and offer age appropriate intervention strategies.
Presenters: Chris Toren, MS, School Psychologist, West Warwick School Department and Behavior Consultant, Sargent Rehabilitation Center.
Sargent Rehabilitation Center is offering a Parent Workshop Series "Link to Learning" All workshops, are free and open to parents are held at Sargent Rehabilitation Center."
Seating is limited.

**It's Not Just for Fun Anymore:
Innovations in Play and Leisure Skill
Development**
January 25, 2007
7:00pm-8:30pm

"This workshop will address the play and leisure skill needs of children and adolescents with Autism Spectrum Disorders. Its focus will be on the development of play and leisure skills that are tailored to the contours of the individual's particular symptom's, functioning level, and social-cognitive ability. A social participation play scale will be used as the key ingredient in a systematic formula for designing play/leisure skill interventions that fit the individual's interaction style and social-cognitive ability level."

Presenters: Jennifer Twachtman-Reilly, M.S., CCC-SLP, ADDCON Center, Higganum, CT

**Advanced registration is
requested by calling Link Line at
401.886.6612**

Learning Opportunities for Families and Professionals

Brain Injury Education Series Medical Complications Following Brain Injury

January 10, 2007

4:00pm-5:30pm

Warwick

“Assessment and treatment of medical issues such as endocrine problems, peripheral nerve injuries and heterotopic ossification in brain injury rehabilitation

Speaker: Jon A. Mukand, MD, PhD, Psychiatry Consultant, Sargent Center & Medical Director, Southern New England Rehabilitation Center

Audience: Professionals, though survivors and family members are welcome.”

Rediscovering the Self After Brain Injury and How the Family Can Help

January 24, 2007

6:30pm-8:00pm

Warwick

“Common features of the loss of one’s sense of self following brain injury and ways to rebuild personality and self-confidence

Speaker: Sherri Provencal, PhD, Neuropsychologist, Sargent Center

Audience: Survivors and family members, though professionals are welcome.”

Academic Challenges of Students with Brain Injury: How to be an Ex- ecutive Function Coach

February 7, 2007

4-5:30 pm

Warwick

“Ways to enhance learning using strategies to address academic, cognitive and socio-emotional challenges of students with brain injury

Speakers: Colleen McCarthy, Director, Neuro-Rehabilitation Center, Sargent Center; Robin Wyllie, MS, CCC-SLP, Assistant Director, Neuro-Rehabilitation Center, Sargent Center & Kristine Salley, MS, CCC-SLP, Speech-Language Pathologist, Sargent Center Professionals, though survivors

and family members are welcome.”

The Next Step: Accessing Resources for Productive Living After a Brain Injury

February 28, 2007

6:30pm-8:00pm - Warwick

“Panel presentation to address the resources available within the community following rehabilitation
Speakers: Representatives from employment, finance and recreation agencies

Audience: Survivors and family members, though professionals are welcome.”

Those interested must register by calling Sargent Center at 401.886.6600

Federation Annual Statewide Conference

Visions of Community

March 10, 2007

World Trade Center, Boston, MA

“The Federation for Children with Special Needs (FCSN)— Parent Training and Information Center, Massachusetts Family TIES, Parents’ PLACE, Massachusetts Families Organizing for Change and the Early Intervention Parent Leadership Project invite you to our annual statewide conference for parents and professionals who work to enhance educational, mental health, health, and family support services for children with disabilities.”

For more information contact :

Phone: 617.236.7210,

MA Toll-Free: 800.331.0688

Email: fcsninfo@fcsn.org

On Line Training

“Offering Continuing Education Units For Providers Serving Children Ages Birth – Five SELF Assessment-Intervention Process”

“The Center for Development & Disability at the University of New Mexico is offering two online training opportunities on Self-Regulation and the SELF Assessment-Intervention Process for Continuing Education Units. **For registration information please email: reachcdd@salud.unm.edu or visit <http://cdd.unm.edu/ecsp> and click on Training and Education to download a flyer and registration form.”**

“Part I: What is Self-Regulation, Why is it Important & How do We Assess It? A brief Introduction to the SELF Process for Infants & Toddlers

January 15 to January 29, 2007

4 CEUs Cost: \$50

This seminar provides an overview of the complex nature and theoretical foundations of self-regulation. It focuses on the rationale for developing the SELF Assessment-Intervention Process. The seminar presents current theory and research regarding self-regulation and outlines the four regulation domains that provide the framework for implementing the SELF Process.”

“Part II: Assessment-Intervention of Self-Regulation for Infants and Toddlers: Application of the SELF Process

January 30 to March 11, 2007

6 CEUs Cost \$100

This seminar is divided into five modules that focus on the application of the SELF Process. The emphasis of the seminar will be on identifying the underlying factors that impact self-regulation and will include the use of the Observation of Self-Regulation Variables (OBSRV) tool.”

**Part I & II: January 15 to March
11 - 10 CEUs Cost \$140**

Training Opportunities for Families and Professionals

Wrightslaw

From Emotions to Advocacy

January 26, 2007

Charlotte, North Carolina

"In From Emotions to Advocacy training programs (one day, 6 hours), parent advocate Pat Howey teaches you how to take an active role in managing your child's special education, the gentle art of disagreeing, and how to maintain healthy working relationships with the school.

You will learn:

- how to assess your child's strengths and needs
- how to prepare a Parent Report for the IEP team
- how to build healthy working relationships with school personnel
- how to document information that may prevent or resolve disputes
- how to participate as an equal member of your child's IEP team."

For more information contact the Parker Autism Foundation at 704.364.2400

Special Education Law & Advocacy

April 13-14, 2007

Nashua, New Hampshire

"Participants will learn about changes in **IDEA 2004** including:

- New requirements for initial evaluations, reevaluations & parental consent
- New requirements for IEPs, IEP goals, IEP teams, IEP meetings
- New eligibility issues for students with specific learning disabilities
- New procedural requirements and timelines, including the "Due Process Complaint Notice" and "Resolution (IEP) Session."
- Participants will learn about requirements in **No Child Left Behind** including:
 - Reading and research based instruction
 - Highly qualified teachers
 - Parental rights and options
 - High stakes testing

Participants will also learn how to:

- Use tests and measurements to measure progress

- Write SMART IEPs
- Use tactics and strategies for effective advocacy."

For more information contact Education a Must at: info@education-a-must.com

The Autism Project of RI

APRI also offers Social Skills groups for children:

Rat-A-Tat-Tat

January 17 - February 14, 2007

January 20 - February 17, 2007

March 10 - April 14, 2007

A pre-school music and language program designed for children ages 3-5

Leaps and Bounds Foundations

January 20 - February 17, 2007

March 10 - April 14, 2007

A play group designed to teach children the fundamental skills of play: Children are ages 5-15.

Leaps and Bounds

January 17 - February 14, 2007

March 7 - April 10, 2007

A play group instructed by trained professionals to teach group dynamics, social rules/expectations, how to engage in shared experiences, and how to foster positive peer relations. This group is designed for children ages 5-10.

Club Jr.

This pre-teen group is designed for children who can effectively communicate basic wants/needs, call attention to others, protest appropriately, and initiate simple conversations. Children will learn to expand their leisure interests and therefore expand their topic interests during conversations. This group is for children ages 10-13.
January 18 - February 15, 2007
March 8 - April 12, 2007

Club

The Club is a safe and engaging place for teens to hang out. They become integral members of a group as they discuss and participate in community trips. Participants range in age from 13-19.

January 19 - February 16, 2007

March 9 - April 13, 2007

Karate

Therapeutic recreation through Martial Arts. Children ages 4-21 will learn non-violent Shotokan moves in a visually structured format.

January 19 - February 16, 2007

January 20 - February 17, 2007

March 9 - April 13, 2007

March 10 - April 14, 2007

Art

Therapeutic Recreation through visual arts. For ages 5-21. Spring sessions may include photography, media art or clay. Groups will be made based on age and abilities. Please inquire after January 1st for the specific program.

For Information and registration please call:

Susan Sposato 401.785.2666

www.theautismproject.org

Parenting Skills Building Groups

Need more skills in parenting your child with ADHD?

We will be offering a training program for parents with children (ages 6 to 12) with Attention Deficit Hyperactivity Disorder (ADHD) Program sponsored by: Rhode Island Parent Information Network, Beacon Health Strategies and Neighborhood Health Plan of Rhode Island.

For more information contact Barbara Torres at 401.727.4144 x161 or torres@ripin.org to learn more.

Family Support Groups

Brain Injury Association of Rhode Island

Providence:

Families & Survivors

4:30pm-6:00pm

St. Joseph Hospital

Contact Person: Colleen

Fitzsimmons, R.P.T.

401.456.4537

Warwick:

Families and Survivors

6:15pm-7:45pm

Sargent Rehabilitation Center

Facilitator(s): Laurie Hicks, MSW,

LICSW

James Whiteside, MSW, LCSW

401.886.6600

Cranston:

Families and Survivors

3:30pm-5:00pm

Brain Injury Resource Center

Facilitator: Casey Crothers or

Sharon Brinkworth

888.824.8911 or 401.461.6599

Northern Rhode Island:

Families and Survivors

6:30pm-8:00pm

Rehab Hospital of RI, North Smithfield,

Facilitator: Linda Silva, P.T.A.

401.766.0800, x5311

For more information and/or directions, contact the numbers above or call the Brain Injury Association of RI at 461-6599 or Toll Free 888.824.8911

Parent Support Network

Parents Helping Parents

January 11, 2007

February 8, 2007

6:30pm-8:00pm

Support for parents and caretakers of children and adolescents with Mental Health Issues. Hosted by The Bradley Hospital Parents Association. Meeting held in the Pine Room.

For more information, please call Chris-401.432.1205, Linda-401.658.2552, or Melanie-401.421.1055. Free babysitting available. Please call in advance-401.421.1205

Rhode Island Parent Information Network

Parent Support Group for Parents of Children with Special Health Care Needs

First Monday of each Month

10:00am-11:30am

Providence

For more information contact Diane Hernández 401.729.3700

Evening Support Group for Parents of Children with Special Health Care Needs

First Tuesday of each Month

6:00pm -7:30pm

Pawtucket

For more information contact Betsy Masse 401.727.4144 x125

Grupo de Apoyo para Familias Hispánicas con Niños que tienen Necesidades Especiales

(Support Group for Parents of Children with Special Health Care Needs in Spanish)

10:30am-12:00pm

Last Thursday of every Month

Providence

For more information contact Diane Hernández at 401.729.3700

Fathers First

Individual support and information for men caring for children with special needs.

For more information, contact: Mike Masse at 800.464.3399 x133 or mike@fathers1st.org.

Early Intervention Online Support Group

Monday Evenings

8:30pm-9:30pm

This group is for parents who have a

child enrolled in an Early Intervention Program. It is via the internet in a secure chat room.

For more information or to sign up, contact: Paula Reid at 401.727.4144 x122 or visit us at <http://groups.yahoo.com/group/EarlyIntervention>.

Family to Family of Rhode Island

“Family to Family of Rhode Island is a network created by families for families of children and adults with special needs. They offer opportunities for families to connect with one another to share experiences, information, and/or support. Family to Family of Rhode Island is sponsored by Family Voices of RI and Paul V. Sherlock Center on Disabilities.”

For more information please contact Claire 401.456.4732 or Barbara 401.727.4144 or 800.464.3399, x161 www.rifamilytofamily.net



Send us your suggestions!

EI Parent Consultants - Partnerships at Work

*“When up-to-date information, resources and support are needed, who can families and professionals in EI turn to? Try a Parent Consultant! When you access the services of one parent consultant, you get the benefit of a whole team. Navigating systems of care and networking with each other to bring real-time, practical information in family-friendly terms is what they do best. Want to know more about this unique parent-as-partners model? **Read on.....***

Parent Consultants are parents or family members of children with special healthcare needs, educational needs or have unique experience in navigating service systems and programs, such as Katie Beckett, CEDARRs, WIC and Rlte Care to name a few.

With grant funding from the Rhode Island Departments of Human Services and Health, the Rhode Island Parent Information Network (RIPIN) is the designated contractor to provide parent consultant services to families in Early Intervention, as well as several other clinical settings throughout the state. For families in EI, parent consultants assist them with understanding and accessing local and

statewide services, resources and transition planning for their child and family. On any given day or night you can see parent consultants facilitating parent support groups and providing workshops and trainings. EI staff and other professionals will often attend the workshops so they can have current knowledge on topics such as Transition and the Special Education Process. Parent Consultants also train every Surrogate Parent on their rights and responsibilities, helping families to understand the educational, coaching model of EI.

Under the direction of Deborah Milton, EI Parent Consultant Program Manager, Parent Consultants are trained in *Family Centered Practice, Basic Rights, Systems Navigation, and Positive, Solution-Focused Advocacy*, utilizing an *Empowerment Model* that helps families to become confident in navigating and advocating on their own. Often, Parent Consultants turn to *their* best resource, each other. Recently, 3 Parent Consultants worked together, so that one family could receive the support and information

they needed without having to tell their story over and over. RIPIN’s parent consultants; one in Early Intervention, one in a pediatric clinical setting with the Pediatric Practice Enhancement Project (PPEP), and one located at Hasbro Children’s Hospital, kept in constant contact with each other and the family as the child received support and care from EI, their pediatrician and the hospital. This coordinated effort not only supported a frightened family, but the professionals who gave excellent care to a very ill child.

The RI Department of Human Services is committed to family-centered care and involves families/consumers in planning, implementing and decision-making in all of their programs, including EI. EI has a part time parent consultant in all 10 full service EI programs.”

For more information on how a parent consultant can support families and professional in EI, contact Deborah Milton at 401.727.4144 x128.

Rhode Island Auditory-Oral Program

“The Rhode Island Auditory-Oral Program offers an educational option for eligible children who are deaf or hard of hearing to learn to listen and speak as their primary way of communicating and learning. This statewide program is available to those children who require a period of intensive language experiences before joining their hearing peers in general early childhood or elementary classroom settings.

Created in response to the changing needs of children and families, the

Rhode Island Auditory-Oral Program opened in April 2005. This educational option was developed by an extended team of experts in the field of oral deaf education.

Parents are a central part of the teaching team. Home visits and parent participation in individual intervention sessions at school are important components of the program. The commitment of parents and program staff to working as a team ensures that children have full

opportunity to integrate listening skills and spoken communication into their daily life at school and at home.”

**For more information contact:
Sally Arsenault,
RI Dept. Education
401.222.8341**

**John Plante,
RI School for the Deaf
401.222.7436**

“Ask Rhody”

“Ask Rhody a new web based information service is now online. Developed by the Department of Human Services, Center for Adult Health under a Center for Medicare and Medicaid Services Real Choices Grant, it is designed to give consumers, advocates and service providers access to information about available community resources and the agencies and groups that provide them. Another part of Ask Rhody is a benefits screener, which allows someone to check on potential eligibility for several benefits programs offered by the State (only available for a limited number of ADULT programs as of now).

Ask Rhody is based upon the Resource directory that has been developed and maintained by Crossroads RI (formerly Travelers Aid of RI). It is searchable by keyword criteria as well as by geographic area. It contains information about state and non-profit agencies, groups, schools, churches, etc. that provide assistance and services to those in need. Results can be sorted by area, zip code, city or town and other criteria.



Also on the website is a library of frequently used state websites and instructions on how

to conduct searches.

At the present time the information contained in Ask Rhody is for RI based agencies and programs. And is focused mainly on community resources that aid adults and families. Future upgrades are planned which will include more information specific to Children with Special Health Care Needs and a benefits screener for state programs that serve children and families.”

“Ask Rhody” can be found by going to the main DHS website at www.dhs.ri.gov or by going directly to: <http://www.dhs.ri.gov/askrhody/>

Challenging Behaviors?

“Positive Approaches to Challenging Behavior is designed to be used by and to assist parents, regular and special education classrooms, Head Start programs, child care centers, and other community-based programs. The website blends technology with technical assistance to help educators and families. Information about challenging behavior and proactive ways to assess both form and function provides guidance in developing positive behavioral support plans. Project personnel regularly monitor a discussion board, providing an opportunity for

online interaction. In addition, scheduled live chats provide an opportunity to interact directly with experts in early childhood.

The project is administered and managed by the Center for Early Education and Development (CEED), located in Pattee Hall, along with the Institute on Community Integration (ICI) (part of the University Centers for Excellence in Developmental Disabilities Education, Research, and Service [UCEDD]), at the University of Minnesota, College of Education

and Human Development. The creation of this Web site was funded under the Multi-statewide Outreach grant by the U.S. Department of Education (Grant #H024D70015) and the Minnesota Department of Education. The Minnesota Department of Education continues to support this website through the Positive Approaches to Problem Behavior, Trainer of Trainer grant.”

<http://education.umn.edu/ceed/projects/preschoolbehavior/>

Go to: <http://education.umn.edu/ceed/projects/preschoolbehavior/>



**Positive Approaches
to Challenging Behavior
for
Young Children with Disabilities**



Floortime on Web Radio

“Floortime Foundation Web Radio The first live, Web-based radio show to focus on children with autism spectrum and other developmental and learning disorders is now airing every **Wednesday, from 10:00am to 11:00am Eastern time at: www.invisnet.com/webradio**

Infants, Children and Families is hosted by world-renowned child development expert Dr. Stanley Greenspan, and features a variety of guest speakers and topics;

practical advice for parents, professionals and policymakers. Topics include early recognition and treatment of developmental difficulties; the misdiagnosis of autism spectrum disorders; learning to regulate moods and impulses; and pathways to empathy and thinking.

Call in live with your questions at 877.907.8889, or email them ahead of time to: webradio@floortime.org.

You can also email suggestions for topics and guest speakers. Archive web radio shows are now being uploaded.”
Go to: <http://www.invisnet.com/webradio>



Hannah's Helping Hand 2007 Grant Program

“Hannah & Friends is a 501(c)(3) non-profit foundation dedicated to providing a better quality of life for children and young adults with special needs.

The Foundation will provide support for a program called Hannah's Helping Hand (HHH), which will fund quality of life grants for Indiana, including the greater Michiana area, and **Rhode Island families that care for children and adults with special needs.**

The HHH grants will provide low and moderate-income families with stipends that may be used for a wide variety of supports related to their child with a diagnosis of developmental disorders. In order to qualify for a grant, a family must:

- Have a family member with special needs living at home in Indiana, Michiana or Rhode Island.
- Meet the guidelines for financial need. This grant is specifically

for low and moderate-income families. Priority will be given to families with a household income at or under \$35,000 (for a family of four) although in special circumstances families with higher income will be considered. **(see website for more information)**

- We request that parents obtain a letter of recommendation on behalf of your child from a doctor or teacher.

Grant amounts:

HHH Grants will range from \$100.00 - \$500.00. Grants exceeding \$500 may be available for special circumstances in which a specific need is expressed.

Grant requests:

You may apply to use the money for anything that improves the life of your child. Examples of possible uses of grant money:

- Adapted bicycle
- Membership to the YMCA
- Education consultant fees
- Camp tuition

- Puzzles and games
- Occupational therapy
- Social skills training
- Sensory Integration
- Vision services
- Music classes/instruments
- Educational Books and Videos
- Computer software
- Swimming lessons
- Physical therapy
- Horseback riding lessons
- Speech therapy
- Respite care
- Education conference fees
- Video games
- Training Materials
- Educational Advocacy
- Skating lessons
- Sports equipment
- Art classes”

2007 Grant Applications will be available May 1, 2007

Hannah & Friends Nonprofit Foundation for children and adults with special needs
Hannah and Friends P.O. Box 1218
Granger, IN 46530

For more information go to: www.hannahandfriends.org/grants.html

Paul V. Sherlock Center on Disabilities and RI Department of Human Services

Paul V. Sherlock Center on Disabilities
Rhode Island College
600 Mt. Pleasant Avenue
Providence, RI 02908-
1991

Phone: 401.456.8072 (v)
401.456.8773 (TDD)
E-mail: ebrito@ric.edu



We're on the Web:
www.sherlockcenter.org



If your agency or program has training opportunities for families and/or professionals or has a new initiative please email us, we'd love to include it in our next issue.

If you'd like to get on our list serve email us at ebrito@ric.edu



The Paul V. Sherlock Center on Disabilities promotes membership of individuals with disabilities in school, work and community. Located at RI College, the Sherlock Center offers professional development and training opportunities for individuals, family members, educators, and professionals at all levels.

Informational resources include a lending resource library, topical newsletters and a variety of manuals and guides. Technical assistance is provided state-wide as resources permit. Visit the Sherlock Center website for information on initiatives, events, publications, and to access links to local and national disability resources.

Contact the Sherlock Center to receive this publication in an alternate format. The LINK is available on the Internet at www.sherlockcenter.org.



This newsletter was developed in collaboration with the Department of Human Services.